

Applied Water Resource Management in the Lake Chad Basin II (GIZ-CBLT)

Context

The Lake Chad Basin is one of Africa's largest river basins, with a population of about 42 million of over 70 ethnic groups. With its vast expanses of arable and grazing land and rich fish stocks, it is central to the economic and environmental development of the Lake Chad Basin Commission (LCBC) member countries: Chad, Nigeria, Niger, Cameroon, Central African Republic and Libya.

The fragile ecosystem of the Lake Chad Basin is under enormous pressure due to overexploitation and increasing pollution of natural resources, especially due to high population growth and climate change. Because of the scarce resources, conflicts between different population groups are increasingly arising. On top of this, many member countries are confronted with armed conflicts. Poor people, marginalised groups and women suffer particularly from this situation.

The LCBC has the mandate to bring together state, civil society and private actors to promote sustainable management of transboundary water resources and mitigate related potential conflicts. However, the Commission lacks practical experience in implementing such measures, skills to effectively perform its advisory role to its member countries, and financial resources.

Project Objective

The LCBC is better placed to advise its member countries on environmentally friendly, climate change-adapted, gender-sensitive and conflict-reducing management of transboundary water resources.

Strategy

The project strategy builds on the results of the previous project phase (2019-2022) and focuses on organisational, management and technical advice to the LCBC and its member countries on the identification, development and implementation of transboundary water resource management.

Programme

Sustainable water management in the Lake Chad Basin

Budget and Duration

5 million Euros / January 2023 to December 2025

Intervention region and countries

Lake Chad Basin (Chad, Nigeria, Niger, Cameroon, Central African Republic), especially sub-basin Logone

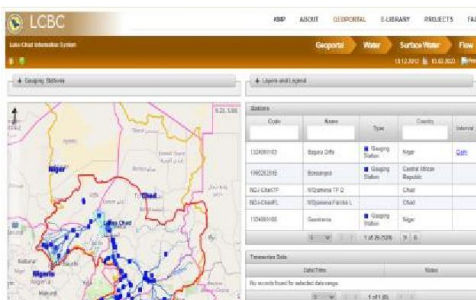
Partner

Lake Chad Basin Commission (LCBC)

Commissioned by

German Federal Ministry for Economic Cooperation and Development (BMZ)

Sustainable Development



Key results of the first project phase 2019-2022

- Developed and validated a concept and its roadmap for implementing a watershed management cycle adapted to the context;
- Developed and implemented the Lake Chad Information System (LIS);
- Identified priority challenges through a partner platform established in the Waza-Logone intervention zone;
- Nearly 2,500 households (of which about 57% are women-led) apply the good agricultural practices developed during the project; of these, more than half were able to increase their income by 10%;
- More than 200 people trained to better identify and strategically plan climate change adaptation measures.

Activities for the phase 2023-2025

Level of the LCBC Executive Secretariat:

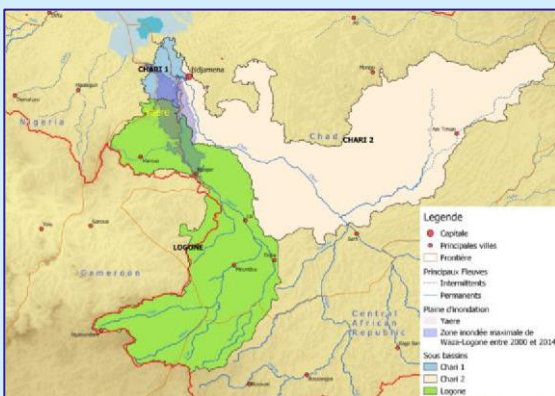
- Organisational advice on the implementation of the watershed management cycle;
- Advice for better use of the LIS by the Executive Secretariat and member countries;
- Development of a concept for the establishment of the Partners' Forum foreseen in the Water Charter.

Regional Level (member countries):

- Technical advice on the evaluation and documentation of learning experiences in the Waza Logone intervention area;
- Organisational advice on the establishment and operationalisation of a multi-stakeholder partner platform in the Logone sub-basin, to identify and address priority challenges;
- Advice to support the platform of partners in implementing concrete and appropriate measures to mitigate and solve the priority challenges identified;
- Analysis of stakeholders in the Komadougou-Yobé sub-basin.

Local Level (Sub-Basin Logone):

- Capacity building of local actors to implement climate change adaptation and conflict mitigation measures;
- Evaluation, processing and documentation of the learning experiences during the implementation of the measures;
- Training of farmers, pastoralists and fishermen in the application of good agricultural practices.



Map of the sub-basin Logone intervention area with about 7.5 million inhabitants, of which about 4 million are in Chad, about 2 million in Cameroon and about 500,000 in the **Central African Republic**.